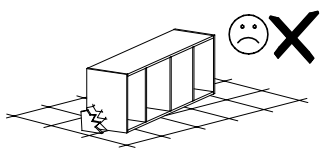
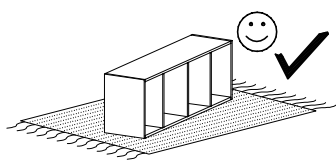
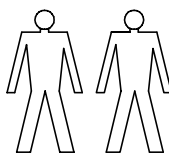
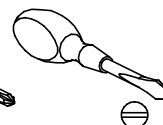
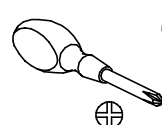
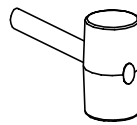
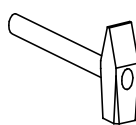


PARIS P12



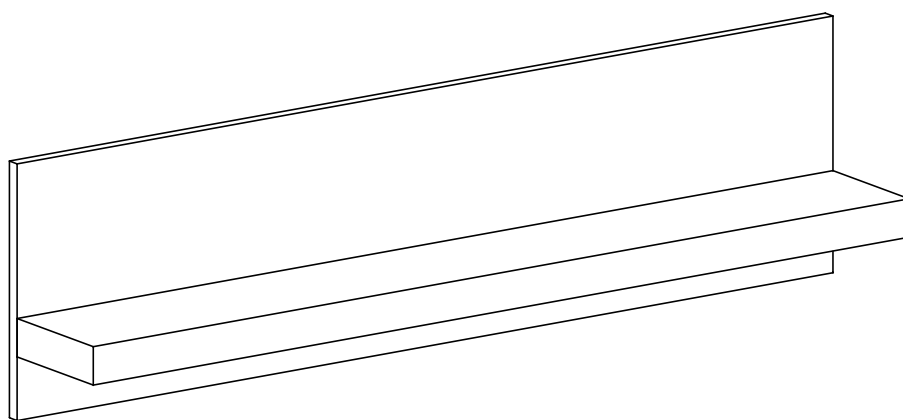
Narzędzia potrzebne do montażu



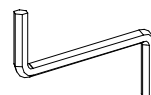
UWAGA !!

MONTOWANIE USZKODZONYCH
ELEMENTÓW POWODUJE UTRATĘ
GWARANCJI

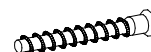
nr	D[mm]	S[mm]	G[mm]	Ilość
1	1200	320	16	1
2	1200	160	48	1



W przypadku reklamacji proszę o podanie numeru pakowacza znajdującego się na kartonie



Z - 1 St.



A - 4 St.

1

